



FLOWERING TULIPS

Enjoy the beautiful color of these large flowering, imported Tulips. Once planted they will grow and multiply for many years. All bulbs are shipped **POSTPAID** at proper planting time for your locality.

Price: 10 for \$1.25; 25 for \$2.95
50 for \$5.45; 100 for \$9.45
All Postpaid

VARIETIES AS ILLUSTRATED

- 5125 THE BISHOP 5111 GOLDEN HARVEST
- 5103 GLACIER
- 5100 PRINCESS ELIZABETH 5104 RED MASTER

Tulips as Illustrated

- 5101 MRS. SCHEEPERS. Deep golden yellow. One of the largest Tulips in existence and choicest of all yellows.
- 5106 PRINCESS MARGARET ROSE. Yellow with distinct edge of bright scarlet. A real beauty.
- 5126 AMERICAN FLAG. Large, deep red with broad white stripes, blue inside. A Tulip worthy of its name.
- 5108 LA TULIPE NOIRE. The jet-black Tulip, very striking.
- 5116 CAMPFIRE. A blazing fire-red. Very strong and substantial.
- 5127 SCOTCH LASSIE. Attractive shade of lilac-lavender. Unrivalled for its beautiful color.
- 5128 SMILING QUEEN. A lovely clear pink with an exquisite flush of deeper color on the outside petals. A charming flower, very strong and long lasting.

TULIPS IN MIXTURE SEE PAGE 2

Plant This Fall

Leading horticulturists recommend it. Ideal planting time—a few reasons are:

- ☉ Stock will make root growth during the warm period in winter.
- ☉ All stock is freshly dug.
- ☉ Everything planted in fall becomes well established by spring and starts faster than spring planted stock.

For FREE GIFTS See Page 15

GARDEN BEAUTY BULBS OF DISTINCTION



Crocus

5160 CROCUS

BLOOMS RIGHT AFTER SNOW

With the first touch of spring these bulbs burst into glorious masses of bloom. A choice assortment including giant yellows, blues, whites and bicolors of all types which are ideal for planting in beds, borders, around evergreens, or as an edging; excellent for cutting too. Very easily grown, no trouble to plant or care for and they come up year after year. You will be amazed at the display at so little cost. **PRICE: 25 for \$1.50; 50 for \$2.95; 100 for \$5.25, postpaid.**



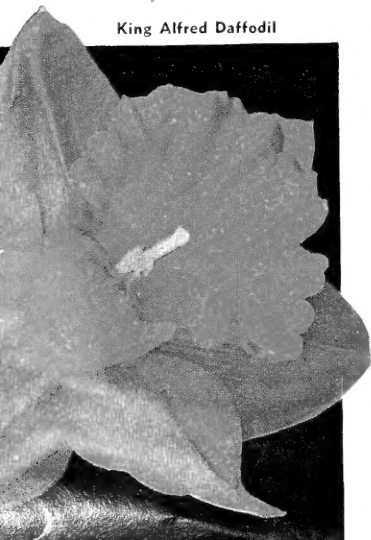
5151 NATURALIZING DAFFODILS

Treat your home to a careful blending of the most beautiful and graceful Daffodils. Thrill to masses of bloom that add fragrance and charm. Bulbs increase year after year, bringing more color each successive spring. Plant freely at these special prices.

PRICE: 25 for \$1.90; 50 for \$3.45; 100 for \$6.45; 500 for \$25.45, postpaid.

For Free Gifts See Page 15

King Alfred Daffodil



FRAGRANT, LARGE BEDDING HYACINTHS

Among the many flowers that can be grown from fall planted bulbs, Hyacinths stand at the top of the list. Large spikes that are exceedingly attractive and so admired.

5164 PRINCESS MARGARET. Bright, clear pink, well filled spikes.

5165 IVANHOE. Unusually large, compact trusses of the darkest blue. Highly recommended.

5166 JAN BOS. Strong stemmed trusses of carmine-red. Large bulbs; the best of its color; always admired.

5167 L'INNOCENCE. Pure white, large trusses; extra fine large bulbs, very handsome.

PRICE: Single bedding varieties, 5 for \$1.15; 10 for \$2.00; 25 for \$4.75, postpaid.



Uncle Tom

DOUBLE TULIPS

The large, full, Peony-like flowers make a most colorful display wherever grown. The massive, double blooms are held erect on sturdy, 16- to 20-inch stems. Exquisite Tulips of striking beauty.

5118 EROS. Immense. Tones of brilliant rose, sweet scented flowers of good substance and a glowing, showy color.

5119 ROCKET. Striking bright fire-red, very double form, vigorous grower. Flowers are most attractive creating an outstanding display.

5120 UNCLE TOM. A deep mahogany-red, an intriguing color that is unique. Plant in groups of twelve for unusual effects in your garden.

PRICE: 10 for \$1.55; 25 for \$3.25; 50 for \$5.95, postpaid.

THE EXCITING, EXOTIC, UNIQUE PARROT TULIPS

The irregularly formed, fringed petals of Parrot Tulips are most unusual and decidedly different. Their popularity is increasing each year for they are the most interesting plant you can grow. Parrot Tulips bloom the same time as regular Tulips and are stunning scattered about in clumps here and there. Why not try some this year? We are sure you will be pleased. Plant 6 inches apart, 5-7 inches deep.

5121 BLACK PARROT. Velvety black, fantastically fringed.

5129 FIREBIRD. An intense vermilion-red with splashes of green. A very beautiful novelty.

5130 ORANGE PARROT. Dark orange with markings of old gold. Colossal flower sweetly scented. A wonderful fine Parrot of rare color.

PRICE: 10 for \$1.55; 25 for \$3.25; 50 for \$5.95, postpaid.

5150 The Great King Alfred A WINNER IN EVERY GARDEN

When poets write of yellow Daffodils they have King Alfred in mind. The most popular and widely planted Daffodil in the world. Majestic perfection, long lasting, immense size, often 4 inches across the petals and 2 inches across the trumpet. A "must" for your garden. **PRICE: 10 for \$1.90; 25 for \$3.75; 50 for \$6.95; 100 for \$12.95, postpaid.**



5117 TULIPS IN MIXED COLORS

Royal Dutch Assortment

For a full range of colors we have arranged with our growers in Holland a special mixture of all shades. The many colors, together with various shaped flowers are sure to make a grand showing. Low prices are quoted so you may plant liberally. All bulbs are top size and of highest quality.

PRICE:

| | |
|---------------------|--------|
| 25 bulbs for | \$2.45 |
| 50 bulbs for | 4.45 |
| 100 bulbs for | 7.95 |
| All Postpaid | |



Maloney's GARDEN ARISTOCRATS



1840 GOLDEN PRIVET

(*Ligustrum Vickary*)

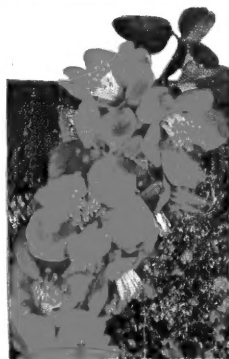
A lovely golden leaf form of Privet. Very colorful in evergreen or shrub plantings. Can be trimmed any size or shape you wish. **PRICE: 15-18 in., \$1.25 each; 2 for \$2.30, postpaid.**



1816 PINK DEUTZIA

(*Deutzia Gracilis Rosea*)

This lovely plant is the prettiest and most graceful of all the Deutzias. It seldom grows over 2-3 feet high and makes a fountain-like bush that is attractive both winter and summer. In late May there is a superabundance of delicate pink flowers which cover the entire plant. It does well in sun or light shade and is excellent for edging walks or in foreground of foundation plantings. **PRICE: 12-15 in., \$1.45 each, postpaid.**



1819 RED JAPANESE QUINCE

(*Cydonia Japonica*)

Early in the spring this delightful shrub is especially brilliant blanketed with dazzling scarlet flowers, followed by dark green, glossy foliage. Very desirable for single specimens or hedges and the fragrant blossoms are ideal for cutting. Truly a versatile favorite and a "must" for your garden. Maturity height 3-4 ft. **PRICE: 2-yr., blooming size plants, 15-18 in., 90¢ each; 2 for \$1.70, 18-24 in., \$1.00 each; 2 for \$1.80, postpaid.**

PLEASE ORDER BY CATALOG NUMBER

NEW CRIMSON KING MAPLE

2517—Red Leaf, truly the King of all Maple trees. A maroon or red leaved tree which originated in Europe. After being observed for ten or more years it has proven in every instance to maintain its gorgeous red color all through the season. Its rounded, compact top makes it the best of all red leaf shade trees. We recommend it without reservation. Maturity height 50 ft. Pat. No. 735. **PRICE: 4-5 ft., \$4.95 each.**

New Seedless MORAINÉ LOCUST

FAST GROWING—LONG LIVED—SEEDLESS
2516—This beautiful new form of Locust, which is almost entirely free from thorns, is a vigorous and rapid grower. It will create light, airy shade quickly with its canopy of lace-like foliage. Free from insect pests. It is a hardy tree—grows on most every kind of soil. It looks somewhat like American Elm in its graceful beauty. It is a clean tree with no unsightly seeds on your lawn. We recommend it to you highly. **PRICE: 5-6 ft., \$5.95 each.**

EVERGREEN BITTERSWEET

(*Euonymus Radicans Vegetus*)

**A VINE—A SHRUB—RED BERRIES
GREEN LEAVES ALL WINTER
HARDY IN ALL PLACES**

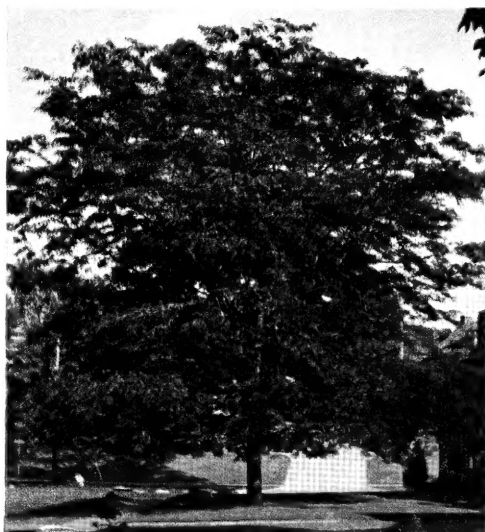
One of the most attractive plants that will climb upon rocks and walls or may be left to grow as a bush. Lustrous, glossy green leaves remain 12 months of the year and the bright orange-scarlet berries are a sight to behold. Very easy to grow and thrives everywhere in sun or shade. Examine your planting for surely this will make your home more attractive. **PRICE: 2-yr., No. 1 plants, \$1.25 each; 2 for \$2.40, postpaid.**



The New Cardinal Shrub

(*Weigela Vaniceki*)

1845—New. Trumpet-shaped rosy red flowers covering the bush from top to bottom in May and June continuing to blossom until frost. Does well in any soil and in full sun or part shade. 5-6 feet at maturity. **PRICE: 2-yr., blooming size plants, 18-24 in., \$1.25 each; 2 for \$2.35, postpaid.**



For
Modern Plantings

MALONEY'S SHRUBS

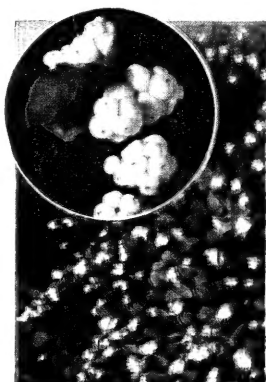
Practical
and Inexpensive



HYBRID PINK SPIREA

(*Spirea Macrothyrsa*)

1825—Without doubt the finest pink Spirea ever introduced. Enormous spikes of cameo-pink flowers up to 12 inches long. Clusters of secondary spikes follow after cutting, and by trimming out the old flowers the plant can be made to bloom until late September. **PRICE:** 2-yr., blooming size plants, 18-24 in., \$1.25 each; 2 for \$2.30, 2-3 ft., \$1.50 each; 2 for \$2.80, postpaid.



1820 SNOWBERRY

(*Symphoricarpos racemosus*)

Strikingly beautiful shrub whose waxy white fruit following pink flowers closely resembles Snowballs. The fruit hangs in tiny clusters nodding a welcome invitation to our feathered friends well into the winter. Unusually attractive, hardy and grows everywhere. Maturity height 4-5 ft. **PRICE:** 2-yr., blooming size plants, 18-24 in., \$1.00 each; 2 for \$1.80, 2-3 ft., \$1.25 each; 2 for \$2.30, postpaid.



1833 RED TWIG DOGWOOD

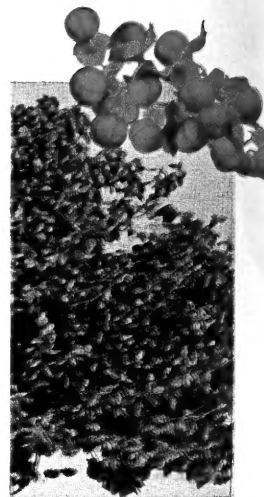
(*Cornus Stolonifera*)

White flowers followed by white berries. In winter, the branches are vivid red. **PRICE:** 18-24 in., \$1.00 each; 2 for \$1.80, 2-3 ft., \$1.25 each; 2 for \$2.30, postpaid.



1844 TAMARIX AFRICANA

Pink flowers, graceful filmy foliage. Blooms early, 4-5 ft. at maturity. **PRICE:** 18-24 in., \$1.00 each; 2 for \$1.80, 2-3 ft., \$1.25 each; 2 for \$2.30, postpaid.



**INDIAN SUNSET
The Ever Popular
BITTERSWEET**

(*Celastrus Scandens*)

2405—The beauty and romance of genuine old-fashioned Bittersweet cannot be surpassed. The vines will clamber up rock walls, cover trees, stumps and trellises. The lush tropical green foliage turns to golden yellow in the fall forming a perfect setting for the orange-red berries that are so prized. **PRICE:** \$1.00 each; 2 for \$1.80, postpaid.

You Can RELY
on Maloney's

**1811 FORSYTHIA,
"SPRING GLORY"**

New. A brilliant new Forsythia which is really a magnificent sight to behold when mature and in full bloom—branches completely covered with larger than average flowers. Canes grow erect with gracefully drooping tips giving the effect of a giant sunburst. Very hardy in all sections of the country and thrives and grows vigorously in all soils, 6-8 feet at maturity. **PRICE:** 2-yr., blooming size plants, 18-24 in., \$1.00 each; 2 for \$1.80, 2-3 ft., \$1.25 each; 2 for \$2.30, postpaid.



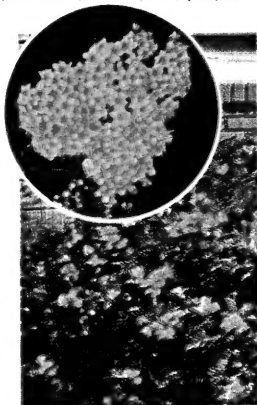
Forsythia, Spring Glory



**1821 TARTARIAN
HONEYSUCKLE**

(*Lonicera Tatarica Rubra*)

A very rapid grower. Makes a wonderful showing the first year. In May and June conspicuous with a mass of spangled pink flowers, followed by a multitude of scarlet berries and lively green foliage, 6-8 feet at maturity. Often used for hedging. **PRICE:** 2-yr., blooming size plants, 18-24 in., \$1.00 each; 2 for \$1.80, 2-3 ft., \$1.25 each; 2 for \$2.30, postpaid.



**1826 SPIREA
ANTHONY WATERER**

Broad, flat heads of red flowers in profusion all summer. Particularly good as a border plant in flowering shrub beds, 3 ft. at maturity. June-July. **PRICE:** 15-18 in., \$1.00 each; 2 for \$1.80, 18-24 in., \$1.25 each; 2 for \$2.30, postpaid.

For Free Gifts
See Page 15



1809 DOUBLE MOCK ORANGE

(*Philadelphus "Enchantment"*)

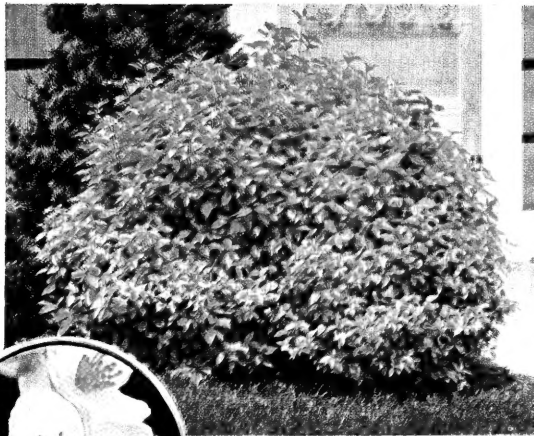
Supply your own bridal bouquet from this beautiful, sweet scented shrub that is smothered with large, pure white flowers from the ground up in June. Succeeds everywhere. Maturity height 6-8 ft. **PRICE:** 2-yr., blooming size plants, 18-24 in., \$1.35 each, 2-3 ft., \$1.60 each, postpaid.



1843 CORK BARK BURNING BUSH

(*Euonymus Alatus*)

Covered with leaves of glowing scarlet-flame in fall and ornamental red berries. A beautiful, compact growing shrub with interesting corky-winged bark! Nature's most brilliant spectacle of vivid red colors! Easy to grow, thrives everywhere, perfectly hardy. Maturity height 8-10 ft. **PRICE: 2-yr., 15-18 in., \$1.75 each, postpaid.**



GOLDEN SYRINGA

(*Philadelphus Aureus*)

1846—Beautiful yellow foliage, white flowers. Very sweetly scented. 3-5 ft. at maturity. May. **PRICE: 2-yr., No. 1 plants, \$1.75 each; 2 for \$3.30, postpaid.**

A Shrub Deluxe



FLOWERING ALMOND

(*Prunus Amygdalus*)

1841—A gorgeous shrub. Rose colored blossoms resembling small Roses. Low growing, only 4 ft. at maturity. Blooms in May. Beautiful in the garden in groups or singly on the lawn. **PRICE: 2-yr., blooming size plants, 18-24 in., \$1.25 each; 2 for \$2.30. 2-3 ft., \$1.50 each; 2 for \$2.80, postpaid.**



1817 VARIEGATED WEIGELA

(*Weigela Rosea Nana Variegata*)

Fine dwarf shrub. Silvery variegated leaves. Flowers rose with white eye. 4-5 feet at maturity. July. **PRICE: 2-yr., blooming size plants, 15-18 in., \$1.00 each; 2 for \$1.80. 18-24 in., \$1.25 each; 2 for \$2.30, postpaid.**



PEEGEE HYDRANGEA

(*Hydrangea Paniculata Grandiflora*)
SHRUB FORM

1822—During the hot summer months this favorite is covered with great white pyramidal shaped blooms that droop gracefully from their own weight and gradually turn to beautiful tints of rose and bronze. Excellent for winter decoration when dry. Hardy, easy to grow, sure bloomer. Maturity height 4-5 ft. **PRICE: 2-yr., blooming size plants, 15-18 in., 90c each; 2 for \$1.70. 18-24 in., \$1.00 each; 2 for \$1.80, postpaid.**

1842 PINK PUSSY WILLOW

A fine cultivated French variety with dainty silvery pink flowers every winter. An attractive shrub in summer which can be used for fall screens or background. Large catkins of silver-pink from 1 to 2 inches long. Maturity height 10 ft. **PRICE: 18-24 in., \$1.25 each; 2 for \$2.30, postpaid.**



1815 VAN HOUTTE SPIREA

(*Spirea Van Houttei*)

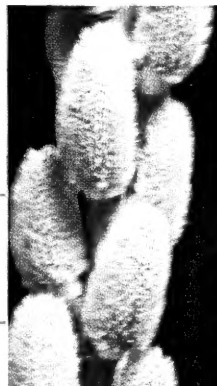
Completely covered with thousands of pure white blossoms that gracefully cascade into a fountainous effect. Most popular Spirea. Excellent for hedges. 6-8 feet at maturity. **PRICE: 2-yr., blooming size plants, 18-24 in., 85c each; 3 for \$2.40; 10 for \$7.50. 2-3 ft., 95c each; 3 for \$2.70; 10 for \$8.50, postpaid.**



1824 RED-LEAVED BARBERRY

(*Berberis Thunbergi Atropurpurea*)

Foliage rich bronzy red. Brilliant throughout summer and fall. Scarlet berries remain on plant the entire winter. Plant in full exposure to the sun. 3 ft. at maturity. **PRICE: 2-yr. plants, 15-18 in., 90c each; 2 for \$1.70. 18-24 in., \$1.00 each; 2 for \$1.80, postpaid.**



Shade and Ornamental Trees *Vigorous, Rapid Growing*



2515 HOPA CRAB (Malus)

A MASS OF COLOR

A vision of beauty with its rosy red flowers, red fruit and attractive purple foliage. Maturity height 20 ft. PRICE: 4-5 ft., \$2.25 each; 5-6 ft., \$2.50 each.

Please Order by
Catalog Number
and Variety

Norway Maple



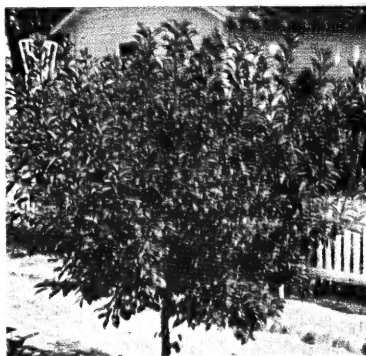
2512 EUROPEAN MOUNTAIN ASH

(Sorbus Aucuparia)

A very ornamental small tree, with fine bluish green, compound leaves and greenish gray bark. Freely produces creamy white flowers in flat clusters, followed by bright scarlet berries which endure for months. Use as a specimen or for accent in borders. Maturity height 25-30 ft. PRICE: 5-6 ft., \$4.50 each.



Mountain Ash



2524 PRUNUS NEWPORT

Small growing tree which retains its purple foliage during the summer and has small red fruits in late summer. Maturity height 12-15 ft. PRICE: 4-5 ft., \$2.25 each; 5-6 ft., \$2.50 each.

601 RED LEAF PEACH TREE

A NEW PEACH TREE WITH FINE FRUIT AND RED FOLIAGE

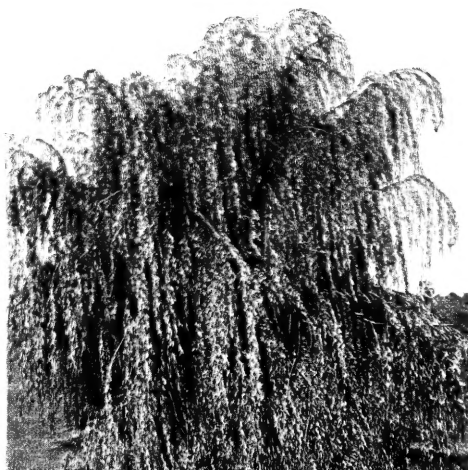
Beautiful bright red foliage appears in the early spring and changes to deep maroon in the fall. The tree produces a crop of small, perfectly round Peaches. The flesh is white and has a sweet flavor, the fruit over-all red color. PRICE: 4-5 ft., \$2.25 each; 2 for \$3.95.

2507 WEEPING WILLOW

(Salix Babylonica)

Well known variety, excellent near water. A large, round-headed, graceful tree. Maturity height 55 feet. PRICE: 4-5 ft., \$2.25 each; 2 for \$4.20, 5-6 ft., \$2.75 each; 2 for \$5.20.

Weeping Willow



[6]

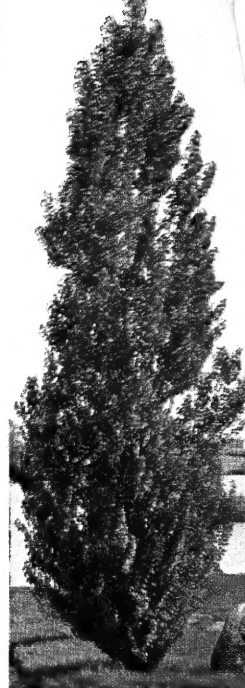
2506 CHINESE ELM

(Ulmus Parvifolia)

Very rapid grower, normally grows 5 feet a year. Resembles Norway Maple in shape. Excellent for windbreaks. Maturity height 75 feet. PRICE: 5-6 ft., \$2.75 each; 2 for \$5.00, 6-8 ft., \$3.25 each; 2 for \$6.00.



Chinese Elm



Lombardy Poplar

2505 LOMBARDY POPLAR

(Populus Nigra Italica)

Tall, spire-like, desirable for boundary lines or driveway entrances. For windbreaks—grows in most soils. PRICE: 3 1/2-5 ft., 65c each; 10 for \$5.50; 25 for \$12.50; 50 for \$20.00. 6-8 ft., \$1.25 each; 5 for \$5.75; 10 for \$9.95.

Famous Washington

2518 CHERRY TREES

(Yoshida Cherry)

These are the trees whose blooms have created so much attention all over the United States. Maturity height 25 feet. PRICE: 3-4 ft., \$3.50 each; 4-5 ft., \$4.00 each.

Washington Cherry Trees



3 MAGNIFICENT MAPLES

2510 NORWAY MAPLE
FOR BEAUTY, SHADE AND LONG LIFE.
PLANT NORWAY MAPLE
(Acer Platanoides)

Large, handsome, desirable for street or lawn. Most widely used shade tree. Maturity height 50 ft. PRICE: 6-8 ft., \$4.95 each; 2 for \$9.25, 8-10 ft., \$6.50 each; 2 for \$12.50.

2508 SCHWEDLER MAPLE

(Acer Platanoides Schwedleri)

This attractive Maple has reddish purple foliage in early spring, changing to deep bronze. Equally good as lawn or street tree. Maturity height 40-50 ft. PRICE: 6-8 ft., \$5.50 each.

2509 SILVER MAPLE

THE FASTEST GROWING MAPLE

(Acer Saccharinum)

Foliage bright green above, silvery beneath. Silver bark. Sugar can be made from sap. Rapid grower. Maturity height 70 ft. PRICE: 5-6 ft., \$2.75 each; 2 for \$5.00.

EVERGREENS

**2921
ANDORRA JUNIPER**
(*Juniperus Horizontalis Plumosa*)



Andorra Juniper

Medium dark green foliage, arching branches. For rock garden or foundation; ground cover. 6 ft. spread. **PRICE: 15-18 in., \$4.25 each; 18-24 in., \$5.00 each.**

NOTE: All evergreens are shipped separate from other stock.

2907 NORWAY SPRUCE

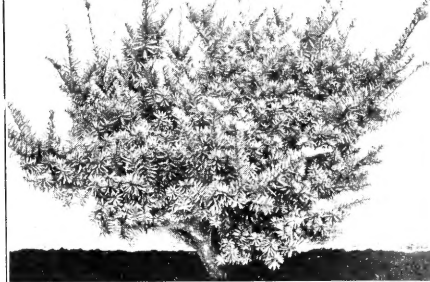
Popular Christmas tree variety; rapid grower, very hardy. Also used as windbreak. Maturity height 35 ft.
15-18 in. \$2.50 each
18-24 in. 3.25 each



Norway Spruce

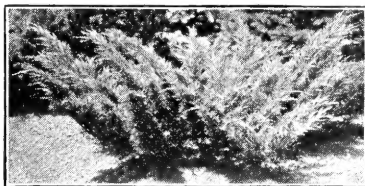
2906 HICKS' YEW
(*Taxus Media Hicksi*)

Beautiful, dense, columnar form; bright red berries in the fall, heavily sheared for specimens. For use in shady places and for foundation planting. Maturity height 5 feet.
15-18 in. \$4.25 each
18-24 in. 5.50 each



2914 DWARF JAPANESE YEW
(*Taxus Cuspidata Brevifolia*)

Dwarf and compact with short, richly dark green foliage. For use in shady areas and for foundation planting. Maturity height 2 ft. **PRICE: 12-15 in., \$3.50 each.**



2917 SAVIN'S JUNIPER
(*Juniperus Sabina*)

A spreading, vase-shaped shrub with handsome plume-like branches, and dark green foliage. Grows well on limestone soil. Has a 4-5 ft. spread.

12-15 in. \$3.00 each
15-18 in. 3.50 each

2915 PYRAMIDAL ARBOR-VITAE

(*Thuja Occidentalis Pyramidalis*)

A densely columnar type, compact and erect with deep green foliage. Useful for corners and on either side of doorways in foundation plantings. Maturity height 8 feet.
15-18 in. \$2.50 each
18-24 in. 3.00 each

2916 GLOBE ARBOR-VITAE

(*Thuja Occidentalis Globosa*)

Dwarf and globe-shaped with a 3-foot spread. Excellent for edging in foundation plantings and for "facing down."
Each
12-15 in. \$2.25
15-18 in. 3.00
18-24 in. 3.50



Vines

HARDY CLIMBING
Nature's Beautiful Draperies

All Vines Shipped Postpaid

All Vines 2-Yr., No. 1



2415 HALL'S FRAGRANT HONEYSUCKLE

(*Lonicera Japonica Halliana*)
Strong growing vine, ideal for fence, trellis, pillar, etc., and particularly good for covering banks. Fragrant yellow and white flowers. **PRICE: \$1.00 each; 2 for \$1.80; 10 or more 80c each, postpaid.**

2402 SILVER LACE VINE

(*Polygonum Auberti*)

Will grow 20 feet or more. Forms clouds of lacy, misty white blooms, shot with tints of cream and pale rose. Green foliage, lightly bronzed at tips. **PRICE: \$1.25 each; 2 for \$2.40, postpaid.**



2404 BOSTON IVY

(*Parthenocissus Tricuspidata*)

Climbs to any surface, glossy green leaves; thrives in sun or shade; rapid grower. **PRICE: \$1.25 each; 2 for \$2.40, postpaid.**

OTHER VINES NOT ILLUSTRATED

2411 SWEET AUTUMN CLEMATIS (*Clematis Paniculata*). Rapid grower, glossy foliage. Flowers are of medium size, fragrant; pure white, borne in immense sheets in September. **PRICE: \$1.25 each; 2 for \$2.40, postpaid.**

2401 PURPLE WISTERIA. Grafted. Leaves are fern-like, in long fronds. Flowers appear in May or June as dense, drooping racemes a foot or more long, of pea-like florets. **PRICE: \$1.75 each, postpaid.**

2414 TRUMPET VINE (*Bignonia Radicans*). The bright scarlet trumpet-shaped flowers are most attractive; very good foliage. **PRICE: \$1.00 each; 2 for \$1.90, postpaid.**

Ever-blooming Roses

All Hybrid Tea Varieties

PRICES: 2-yr., No. 1, Everblooming Hybrid Tea Roses, \$1.35 each; 3 for \$3.85; 5 for \$6.00; 8 or more, \$1.00 each, postpaid.

- (A) 3742 POINSETTIA. Red.
 (B) 3776 SIGNORA. Variegated.
 (C) 3731 SNOWBIRD. White.
 (D) 3775 WILL ROGERS. Red.
 (E) 3774 PICTURE. Pink.

Choice Varieties Not Illustrated

3773 CHRISTOPHER STONE. Scarlet, bud long pointed, flower large, fragrant.

3727 ECLIPSE. Flowers yellow on long, strong stems. Vigorous.

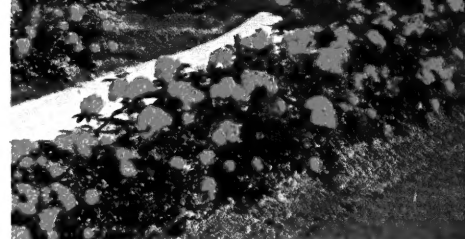
3772 LOS ANGELES. Luminous flame-pink, toned coral. Free blooming.

3771 MCGREDDY'S YELLOW. Bright buttercup-yellow, large; foliage glossy.

3761 MRS. CHARLES BELL. Distinct shell-pink. Profuse bloomer.



The Famous Paul's Scarlet Climber



Mother's Day

CLIMBING ROSES

PRICES: 2-yr., No. 1, choice plants, \$1.35 each; 3 for \$3.85; 5 for \$6.00; 10 or more at \$1.00 each, postpaid.

- 3712 BLAZE. Double, dazzling scarlet, very vigorous.
 3715 PAUL'S SCARLET. Large, vivid scarlet-red, will not fade.
 3714 NEW DAWN. Double, blush-pink, foliage dark and glossy. Long bloomer.
 3777 DOUBLOONS. Deep saffron-yellow, large double flowers on strong stems.
 3716 SILVER MOON. Big, saucer-shaped, moon-white flowers with yellow centers.

Floribundas Roses Blooming Summer and Fall

3711 RED PINOCCHIO. Pat. No. 812. Rich carmine blooms which deepen to a rich scarlet with a velvety cast. Long lasting blooms that do not fade and are delightfully fragrant. The plant is bushy, vigorous and hardy everywhere. PRICE: \$1.50 each; 3 for \$3.90, postpaid.

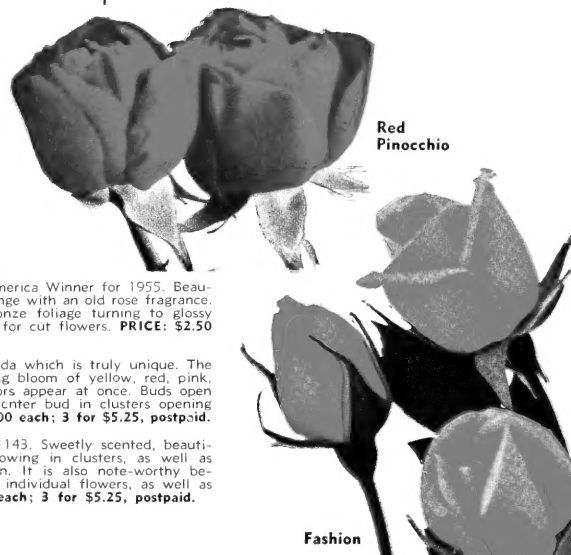
3755 FASHION. Pat. No. 789. An All-America Winner Floribunda in 1950. Fashion is coral-pink suffused with gold. The blooms persist without interruption from June until frost. The plants are vigorous, bushy, with small, glossy foliage. PRICE: \$2.00 each; 3 for \$5.25, postpaid.

3709 GOLDBLOCKS. Pat. No. 672. Clusters of bright yellow blooms from early spring through summer and fall. Flowers cupped in early stages and gradually open to 3 1/2 inches across. PRICE: \$1.50 each; 3 for \$3.90, postpaid.

3705 JIMINY CRICKET. Pat. No. 1346. All-America Winner for 1955. Beautiful fangeme-red buds opening to coral-orange with an old rose fragrance. A vigorous, upright grower with glossy bronze foliage turning to glossy green. It blooms all season and is excellent for cut flowers. PRICE: \$2.50 each; 3 for \$6.60, postpaid.

3756 MASQUERADE. Pat. No. 975. A Floribunda which is truly unique. The plant has clusters of 10 to 25 buds showing bloom of yellow, red, pink, lemon and sometimes orange. All these colors appear at once. Buds open golden yellow, with tiny vermilion marks, center bud in clusters opening first a rosy pink changing to red. PRICE: \$2.00 each; 3 for \$5.25, postpaid.

3710 MA PERKINS. Pat. No. 1143. Sweetly scented, beautiful coral-salmon flowers growing in clusters, as well as singly throughout the season. It is also note-worthy because of the quality of the individual flowers, as well as mass bloom. PRICE: \$2.00 each; 3 for \$5.25, postpaid.



Red Pinocchio

Fashion

THREE MOST COLORFUL POLYANTHA ROSES

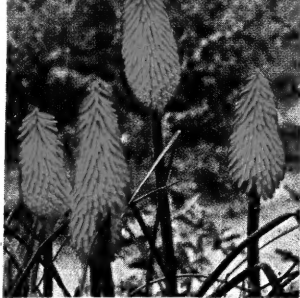
As Versatile as Perennials.
 As Brilliant as a Sunset.
 As Abundant in Bloom as the Stars.
 As Hardy as the Trees in the Woods.

PRICE: 2-yr., No. 1, choice plants, \$1.35 each; 3 for \$3.85; 5 for \$6.00; 10 or more at \$1.00 each, postpaid.

3753 CAMEO. Myriads of delicate shell-pink and salmon flowers are a sight to behold. The lush green foliage provides a sharp and interesting contrast to the flowers which just bloom continuously. Unsurpassed in any garden.

3757 GLORIA MUNDI. An intense orange-red that glows like colorful copper. Such a profuse bloomer that each plant is a garden in itself. One of the most exciting Polyanthas with excellent foliage. Don't fail to get this one.

3719 MOTHER'S DAY. Always full of bright cherry-red blooms creating a garden by itself. A delightful outstanding red, framed in handsome dark green foliage. The answer when you want a fine red. Very choice.



3512

TRITOMA MIRABILIS

Colossal spikes of bloom producing showy effect. Bright orange-scarlet flowers. Maturity height 2 to 3 feet. **PRICE: 60c each; 3 for \$1.65, postpaid.**

Maloney's **Massive PEONIES**

Our Peonies are chosen for color and bloom from the best varieties. Very hardy plants that will last a lifetime.

PRICES: \$1.15 each; 3 for \$3.00, postpaid.

5170 **FELIX CROUSSE.** Brilliant crimson, large flowers, extra fine for all plantings.

5171 **MOUNT EVEREST.** Rounded mound of snow-white.

5172 **SARAH BERNHARDT.** Large, full petaled. Rose-pink.

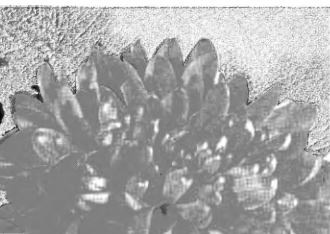
5011 **EDULIS SUPERBA.** Sparkling bright pink.

5012 **FESTIVA MAXIMA.** White with crimson flecks.



PERENNIAL PLANTS - Best Varieties That Live for Years

Tall Growing
CHRYSANTHEMUMS



PRICE: 75c each; 3 for \$1.95, postpaid.

3525 **ALGONQUIN.** Excellent very early yellow with beautiful double flowers. Maturity height 2 1/2 ft.

3526 **ORCHID HELEN.** Orchid-pink blooms, very double, a most attractive plant. Blooms in September. Maturity height 2 ft.

3556 **RED CUSHION.** Plant covered with hundreds of bright red flowers from September on. Maturity height 18 inches.

3557 **SANTA CLAUS.** Large red flower heads. Indispensable for fall blooming. Maturity height 2 1/2 ft.



PHLOX

PRICE: 65c each; 3 for \$1.60, postpaid.

Your Choice of Varieties:

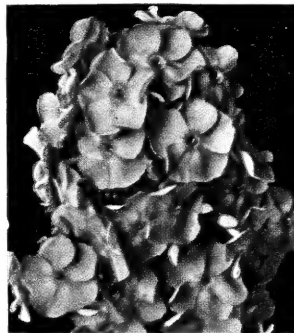
3514 **AMERICAN BEAUTY.** Pink.

3515 **BLUE BOY.** Blue.

3516 **BRIGADIER.** Red.

3517 **SAN ANTONIO.** Reddish orange.

3533 **WORLD PEACE.** White.



Blue Boy

PERENNIALS NOT ILLUSTRATED

PRICES OF PERENNIALS (Except where noted): 60c each; 3 for \$1.65, postpaid.

3542 **CANDYTUFT** (Iberis). In bloom in May with white flowers 6 in. high on very glossy, green foliage. Used for bordering or rockery.

3538 **DELPHINIUM, PACIFIC HYBRIDS.** Large flowering spikes in a variety of lovely blue shades. Unusually attractive. Maturity height 4-5 ft. **PRICE: 75c each; 3 for \$1.95, postpaid.**

3558 **FESTUCA GLAUCA.** Blue stemmed grass, true blue grass, dense glaucous tufts.

3559 **GAILLARDIA BURGUNDY.** Very compact, globular plants of red. Blooms abundantly. Maturity height 18 in.

3544 **HELIANTHUS MULTIFLORA FI-PL.** Large, double golden flowers in July and August, when other flowers are not plentiful. Has a Dahlia-like appearance. Maturity height 4 ft.

HEDGES • Living Fences

Well-Rooted Plants—Ideal For Permanent Hedges

2205 **AMUR RIVER PRIVET** (Ligustrum Amurense). Hardy. Of similar form to California type, safest for cold climates. 2-year, strong plants, well branched.

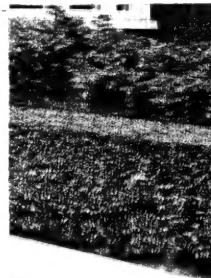
New, Dwarf
2211 LODENSE PRIVET

One of the better new horticultural introductions for ranch type and split level homes. All the characteristics of other Privets, but never grows over 3-4 feet high. May be sheared to any desired form or let grow naturally. Very hardy and almost an evergreen, it keeps its leaves well into the winter.

2206 **CALIFORNIA PRIVET** (Ligustrum Ovalifolium). Leaves are rich green and lustrous, will remain on plant almost all winter.

PRICE OF ALL PRIVET

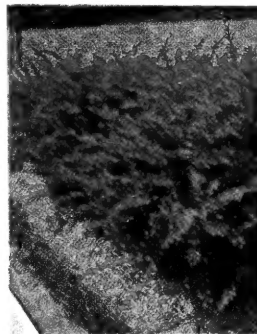
| | 10 | 25 | 50 | 100 |
|----------------|--------|--------|---------|---------|
| 15-18 in. | \$2.50 | \$4.75 | \$ 9.00 | \$17.00 |
| 18-24 in. | 3.00 | 5.50 | 10.50 | 19.95 |



Amur River Privet

2204 RED BARBERY

(Berberis Thunbergi Atropurpurea) Hedge size. Foliage bronze-red, changing to vivid orange and scarlet in fall. Red berries remain during winter. 10 25 50 100 12-18 in. \$4.95 \$9.95 \$18.75 \$35.00



Red Leaf Barberry

2201 GREEN BARBERY

(Berberis Thunbergi) Pretty plant of dwarf habit. Graceful foliage, turning to a beautiful red in the fall. Prickly, keeps dogs away. 2-year, strong plants, well branched. 10 25 50 100 \$6.50 \$15.00 \$27.50 \$50.00 18-24 in. 7.50 17.50 32.50 60.00 12-18 in. seedlings 2.50 5.50 10.00 18.50

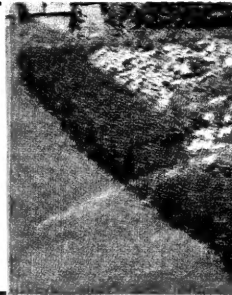
2209 Fast Growing POPLAR HEDGE

Stately Lombardy Poplar trees may be kept trimmed, causing the trees to branch from the ground. When planted one foot apart will make a dense wall. **PRICE: 1-yr. plants, 3-4 ft., 10 for \$5.00; 25 for \$11.25; 50 for \$20.00.**

3541 MIDGET HEDGE

(Teucrium Chamaedrys)

A delightful small plant with leaves like expensive English Boxwood. Ideal for edging and can be clipped to any height. **PRICE: 60c each; 3 for \$1.65, postpaid.**



Hardy, Vigorous RASPBERRY BUSHES

LATHAM

A Leader in Raspberries

1604—An all-purpose Raspberry. By far the most popular commercial and home garden variety. Large, round, richly brilliant red. A superb success in quality, production and profits. Fruit clings to stem several days after fully ripe. Early July. **PRICE, postpaid: 10 for \$2.75; 25 for \$4.95; 50 for \$8.50. Not postpaid, 100 for \$14.95; 250 for \$30.00; 500 for \$48.85; 1000 for \$85.00.**

MONEY SAVING RASPBERRY COLLECTION "A"

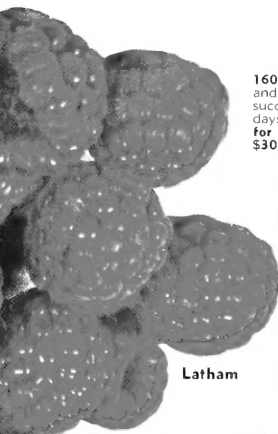
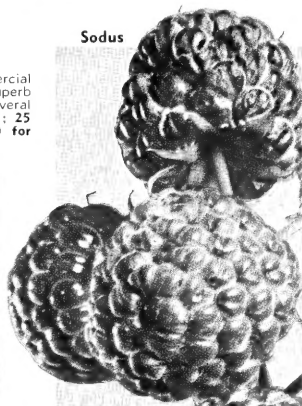
20 Plants for \$3.95

Postpaid

10 Cumberland 10 Latham

\$5.50 Value

Sodus



Latham

PRICES OF ALL VARIETIES (Except as noted): 1-yr., No. 1, select plants, postpaid, 10 for \$2.75; 25 for \$4.95; 50 for \$8.50. Not postpaid, 100 for \$14.95; 250 for \$30.00; 500 for \$48.85; 1000 for \$85.00.

1607 INDIAN SUMMER. The wonderful everbearing Red Raspberry. Crop twice a year. Has very small seeds. Berries large, roundish, slightly irregular, good in quality, heavy yielder. Escapes mosaic.

1602 SODUS. Purple. Berries very large, firm and good flavor. Much more resistant to drought. Mid-July.

1606 TAYLOR. New Red Raspberry from New York Experiment Station. Long, conical shape; firm, thick flesh; flavor excellent. Larger than Latham and one of the heaviest bearers we have ever seen. Very early July.

1603 SEPTEMBER. A new Everbearing Raspberry. The red everbearing Raspberry introduced by the New York State Experiment Station. It ripens at least 2 to 4 weeks earlier than Indian Summer. The berries are of medium size, bright red, good quality. The plants are vigorous. Excellent for freezing. Escapes mosaic. **PRICE: Postpaid, 10 for \$2.85; 25 for \$5.45; 50 for \$9.50. Not postpaid, 100 for \$16.95. Write for prices in larger quantities.**

1608 CUMBERLAND. Black. Berries large, firm, glossy and unsurpassed in quality. Early July.

1609 NEW MORRISON. New Black Raspberry. It ripens a little later than Cumberland. The color is an intense, glossy black, so attractive that these huge berries sell on sight. The fruit has almost no seeds, firm texture, yet juicy. In short, this is the most promising new Black Raspberry.

Cultivated BLUEBERRIES

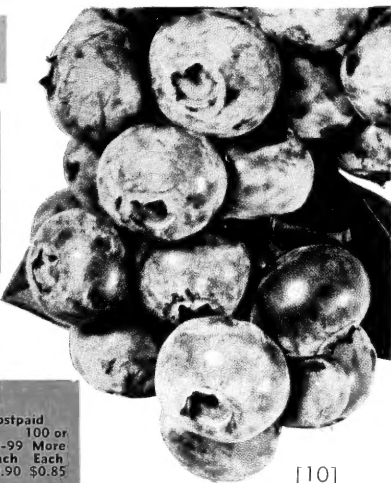
Not Huckleberries but Large Size Genuine Cultivated Varieties

Our Famous Blueberry Collection "B"

12-18 in. Your Choice of Varieties

4 Bushes for Only \$4.20 | 8 Bushes for Only \$7.95

Postpaid



[10]

1614 CONCORD. High bush, berries large, well flavored and attractive in appearance. Midseason.

1615 RANCOCAS. Upright grower, vigorous, hardy; fruit very fine flavor. Fruit medium to large size. Sets very heavy crop of fruit buds. Midseason.

1616 JERSEY. Tall, nice shaped bush of attractive appearance. A good producer. Berries are large and of good quality. Late.

1617 WEYMOUTH. Plants seldom exceed 4 feet in height and are a spreading type with dark green foliage. One of the earliest berries to ripen. Large berries with sub-acid flavor.

PRICES OF ALL BLUEBERRIES

| | Postpaid | | Not Postpaid | |
|-----------------------|----------|--------|--------------|---------------|
| | 3-10 | 11-29 | 30-99 | 100 or More |
| 12-18 in. Each | \$1.40 | \$1.10 | Each | Each |
| 3-year, 18-24 in. . . | 1.95 | 1.70 | 1.05 | \$0.90 \$0.85 |
| | | | 1.45 | 1.30 1.20 |

5 in One

NATURE'S MIRACLE APPLE TREE

Scientific budding has co-ordinated 5 different varieties of Apples all to grow on a single tree.

It's a revelation and you will be abundantly supplied with fresh picked fruit the season through.



A Real Paying Guest For Your Garden

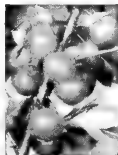
Actually has five different kinds of Apples on one tree. You need give no special attention, just pick and eat; red and yellow, early and late. An ideal one-tree orchard that will bear bumper crops and provide useful shade. Standard trees grow to a height of about one story and are recommended for all properties. Bears in about three to six years.

VARIETIES: Cortland, Double Red Delicious, Early McIntosh, Yellow Delicious, Yellow Transparent. (For description, see standard varieties, page 13). **PRICE: 2-yr., large, 4-6 ft., \$3.25 each.**

Practical Easy to Grow Garden Favorites

1221 HANSEN BUSH CHERRY

Colorful from spring to fall with fine gray-green foliage. Snowy white blossoms followed by deep red fruit. Quick bearing, highly productive, good flavor. Excellent for making jelly. Hardy, easy to grow and sure to produce. Makes a fruitful as well as decorative shrub. **PRICE:** 2-yr., fruiting age, 75c each; 2 for \$1.45, postpaid.



Hansen Fruit



Hansen Bush Cherry



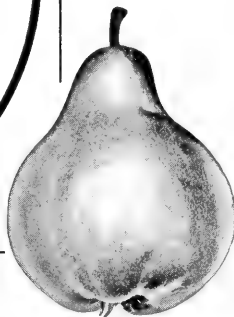
ASPARAGUS Rust Resistant

2300 MARY WASHINGTON, Pedigreed. Mary Washington is heavy yielding, rust resistant, and is fast replacing older varieties in home and market. It is hardy and long lived.

| | |
|-----------------------|---------|
| 2-yr., No. 1—Postpaid | |
| 25 for | \$ 2.50 |
| 50 for | 4.25 |
| 100 for | 6.95 |
| Not Postpaid | |
| 500 for | 21.00 |
| 1000 for | 35.00 |

QUINCE

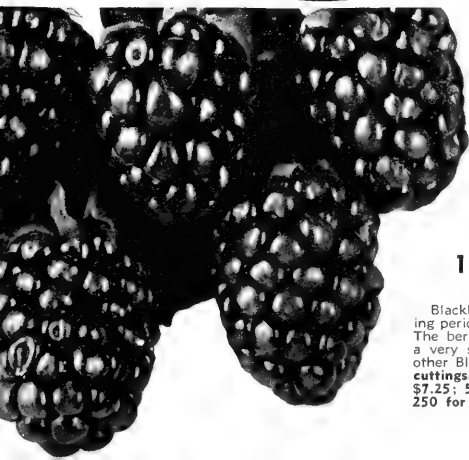
The Top-Notch Fruit for Jelly - Preserves Extra Hardy—Easy to Grow



Dwarf growing. Very good baked, dried, preserved or made into jelly.
1301 ORANGE. Best commercial Quince. Large, yellow, fine quality; tree rarely fails to produce a crop. October.
PRICE: 2-yr., 4-5 ft. tall, \$2.25 each; 3 for \$5.95; 10 for \$17.50.

1621 THE EBONY KING BLACKBERRY

Blackberry is large and ripens uniformly. Its ripening period is about the same as Latham Red Raspberry. The berries are borne in very large clusters and have a very sweet, true Blackberry flavor. Far superior to other Blackberries. **PRICE:** 1-yr., No. 1 selected rooted cuttings, postpaid, 6 for \$1.95; 12 for \$3.75; 25 for \$7.25; 50 for \$13.50. Not postpaid, 100 for \$21.50; 250 for \$49.95; 500 for \$95.00.



PROTECTION—PRIVACY—BEAUTY



We recommend to our customers POPULAR GARDENING, America's gardening magazine, filled with gardening features and pictures, jam-packed with helpful features for Better Living.

Maloney's Deluxe Flavored ORANGE-PINK APRICOTS

PRICES OF ALL VARIETIES OF APRICOTS:

Your choice of varieties, alike or assorted.

| | | |
|---------------------|--------|--------|
| | Each | 3 for |
| 2-yr., 4-5 ft. tall | \$2.25 | \$5.95 |

The date after variety indicates the season during which fruit is at its best.

- 1302 EARLY GOLDEN. Small, pale orange; juicy and sweet. Early August.
- 1303 MOORPARK. Large; orange-red cheek; firm, juicy. Mid-August.

Apricot



Maloney's Sensational Low Cost ROSA MULTIFLORA 2202

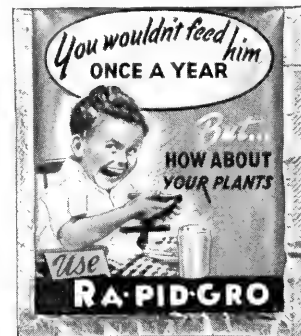
The Protective Rosa Multiflora Hedge A Thorny Living Fence for Only A Few Pennies

For Country and Suburban Home Grounds

Dense Foliage—No Person or Animal Can Get Through

Grows thick, thorny, dense and will thrive in any soil. Excellent protection and attraction for song birds. Not recommended for small properties. Grows to 9 ft. in height, covered with a mass of white blossoms in the spring. Plant 1 ft. apart. **PRICE:** 10-18 in., 25 for \$3.25; 50 for \$5.50; 100 for \$9.95, postpaid.

RA-PID-GRO FERTILIZER



911 The Amazing New Discovery in Foliage Feeding

RA-PID-GRO is 100% usable by plants, it contains no inert materials, no filler. It is all usable and when dissolved in water one pound of RA-PID-GRO makes 22 gallons of liquid plant food.

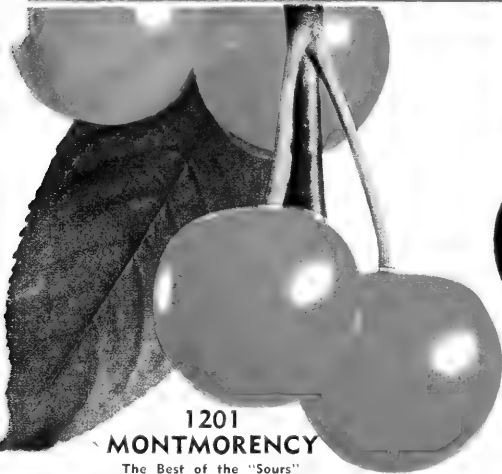
RA-PID-GRO is a miracle-working concentrated food that helps nature bring out the best in your flowers, fruits, vegetables and ornamental shrubs. It contains all the elements intended plants to have plus Vitamin B.

PRICES:

| | | |
|---------------------|-------|--------|
| 1 pound RA-PID-GRO | | \$1.25 |
| 2 pounds RA-PID-GRO | | 2.35 |
| 5 pounds RA-PID-GRO | | 4.50 |

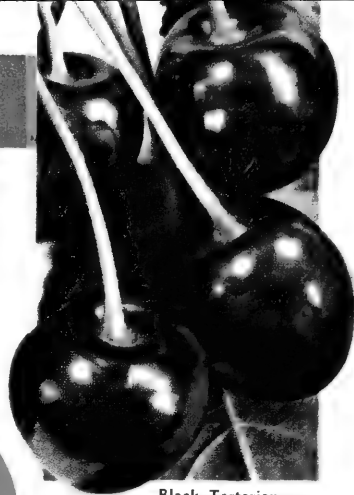
F.O.B. Dansville

CHERRIES



1201 MONTMORENCY
The Best of the "Sours"

The largest and best Cherries grown. Canning factories use hundreds of tons yearly. Our marvelous strain is resistant to **Yellow Leaf**. Fruit dark red, very firm, fine flavor, regular bearer of enormous crops, ships well and brings highest price. Excellent for pies. Mid-July. Decorative in the lawn.



Black Tartarian

1203 BLACK TARTARIAN

Very large, bright purplish black, tender, juicy, very rich. Tree remarkably vigorous and erect grower, and an immense bearer. One of the most popular varieties in all parts of the country. Late June.

Additional Varieties and Descriptions, see page 13.

The Low-Headed Maloney's Strain

PLUMS

1011 STANLEY PRUNE

(New.) Introduced by the New York Experimental Station. Large, Prune-shaped; dark blue becoming bluish black. Flesh greenish yellow, juicy, fine grained, sweet. Freestone. Mid-September.



Stanley

1005 BRADSHAW

Very large and fine early Plum, dark violet-red, juicy and good. Very productive. Valuable for market. Late August.



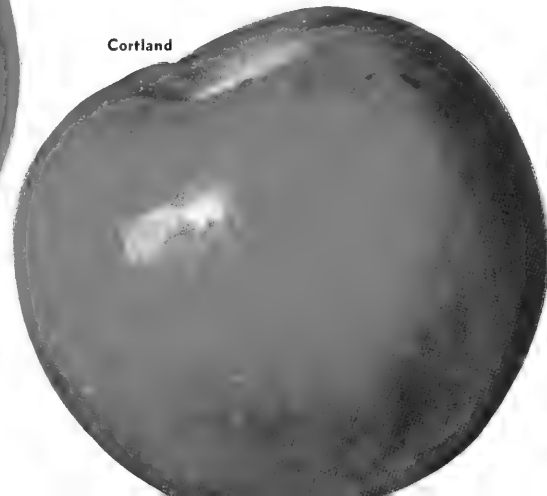
Bradshaw

Maloney's

APPLE TREES

24 CORTLAND

Beautiful red Apple, larger than McIntosh. Matures a month later. Excellent quality. Keeps late in winter and can be handled and shipped like the hardiest market varieties. Fine for culinary purposes. November-April.



Cortland

PEACH TREES

BEAR AT AN EARLY AGE



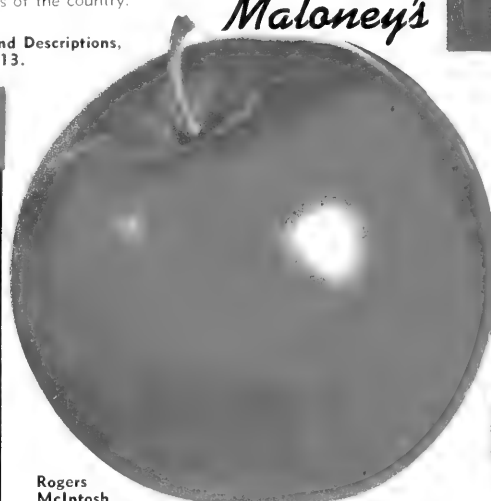
Elberta

624 GOLDEN JUBILEE

Introduced by the New Jersey Experimental Station. It is proving to be a real money-maker. Best canning Peach of all hardy varieties. Fruit large, yellow, flesh yellow, tender, juicy and sweet. Fruit improves as the tree grows older. Late August. Freestone.

622 ELBERTA

Best commercial money-making variety. Fifty per cent of all Peaches planted are Elberta. It has proven its ability to adapt itself to varied climatic and soil conditions. Tree hardy, disease resistant, very thrifty and productive. Fruit large, oval, yellow and red cheek. Flesh yellow, firm, juicy of high quality. Splendid shipper and keeper. Mid-September. Freestone.



Rogers McIntosh

27 ROGERS RED McINTOSH

Solid red McIntosh, classed as one of the valuable new fruit introductions in years. Annual bearer. Fruit is the same size as the common McIntosh, but it is not striped. Flesh white, fine grained, very tender, juicy and refreshing. Better quality than common McIntosh and hangs better on tree. October-January.

BETTER Maloney's APPLE TREES

- 2 **EARLY McINTOSH.** For home orchard or commercial use, this is the ideal variety to plant. Tree vigorous grower. It is a bi-annual bearer unless fruit is thinned shortly after it is set. Fruit same size, quality and flavor as McIntosh Red. Late August.
- 10 **DOUBLE RED DELICIOUS.** Solid red. Excellent quality and flavor. One of the most highly prized winter eating Apples. Everyone should have a few trees of this variety. November-April.
- 24 **CORTLAND.** See illustration, page 12.
- 12 **JONATHAN DARK RED.** For eating fresh, dried, cooked, baked. Skin is rich red all over, long before ripe. Keeps all winter in storage. Better quality than common Jonathan. November-March.
- 19 **ROME BEAUTY.** Large, round. Red striped. December-March.
- 22 **WEALTHY.** Red, flesh white, sub-acid. October-January.
- 17 **RED NORTHERN SPY.** Red Spy is a typical Northern Spy Apple except color. The Red Spy colors a solid bright red without either stripes or splashes. Very popular winter variety. December-March.

- 27 **ROGERS McINTOSH.** See illustration, page 12.
- 9 **BALDWIN.** Large, red, crisp, juicy. Good eating and cooking Apple. Tree vigorous and productive. December-March.
- 18 **R. I. GREENING.** Fruit large and handsome, smooth, dark green overspread with yellow, more highly prized for cooking than any other Apple. December-May.
- 26 **YELLOW DELICIOUS.** This predominantly golden colored Apple has the same unique form as the Red Delicious. Juicy and fine quality. October-April.

Crab Apples

- 31 **HYSLOP CRAB.** Fruit large, deep crimson. Desirable for home use and market. Late September.

APPLE COLLECTION "C"

1 Cortland 1 Yellow Delicious
2-Yr., 3-4 Ft. Trees
2 for \$2.50, Postpaid
(\$3.00 Value)

See Page 12 for Additional Varieties

PRICES OF STANDARD APPLE TREES

Your Choice of Varieties, Alike or Assorted

| | 1-6 | 7-12 | 13-25 | 26-50 |
|--------------------------|--------|--------|--------|--------|
| | Each | Each | Each | Each |
| 2-yr., 4 -6 ft. tall | \$2.25 | \$1.95 | \$1.80 | \$1.60 |
| 2-yr., 3 1/2 -5 ft. tall | 1.75 | 1.65 | 1.45 | 1.25 |
| 2-yr., 3 -4 ft. tall | 1.50 | 1.35 | 1.25 | 1.00 |

Growers please write for special prices on quantity lots of 1-yr. and 2-yr. trees.
The dates after varieties indicate keeping season of the fruit.

World's Finest PEACHES

PEACH COLLECTION "F"

1 Elberta 1 Red Haven
1-Yr., 3-4 Ft. Trees
2 for \$2.50, Postpaid
(\$3.00 Value)

- 602 **BELL OF GEORGIA.** Large, white, red cheek. Late July. Freestone.
- 605 **CUMBERLAND.** A new variety introduced by the New Jersey Experimental Station. Tree is a vigorous grower and very hardy. Fruit red, flesh white. Mid-July. Freestone.
- 606 **ELBERTA, EARLY.** Yellow, large, good quality. Early September. Freestone.
- 607 **J. H. HALE.** Large, yellow. Late August. Freestone.
- 608 **JERSEYLAND.** Very early, ripening about 5 weeks before Elberta. Fruits medium size, round; skin solid red; flesh yellow, usually fine when ripe; firm.
- 612 **VEDETTE.** The tree is productive and the fruit is large, roundish, oval, yellow fleshed. August, freestone.
- 615 **FAIRHAVEN.** A new peach introduced by the South Haven Experiment Station. Very heavy producer with large fruit ripening just after Golden Jubilee. Freestone.
- 616 **GOLDENEAST.** (N. J.) A large, oval, highly colored, yellow-fleshed Peach ripening about 15 days ahead of Elberta. Freestone.

- 617 **REDHAVEN.** Redhaven has the famous flavor bred into South Haven and Hale-Haven. It's a hardy variety and a big yielder. Earliest yellow freestone. Mid-August.
- 619 **SUNHIGH.** (N. J. 82.) Large, bright red all over. Large crops annually. Flesh has a tendency to adhere to pit when hard ripe.
- 620 **TRIOGEM.** (N. J. 70.) Deep red, highly colored Peach. Ripens just after Golden Jubilee, colors up and stays firm on tree for a week. Tree hardy and productive. Freestone.
- 623 **HALE-HAVEN.** This exceptionally fine Peach is a large, beautiful yellow. Flesh yellow, high quality, good shipper. Tree is hardy, strong grower. Early September. Freestone.
- 622 **ELBERTA.** See illustration, page 12.
- 624 **GOLDEN JUBILEE.** See description, page 12.

PRICES OF PEACH TREES

Your Choice of Varieties, Alike or Assorted

| | 1-6 | 7-12 | 13-25 | 26-50 |
|--------------------------|--------|--------|--------|--------|
| | Each | Each | Each | Each |
| 1-yr., 4 -6 ft. tall | \$2.25 | \$1.95 | \$1.80 | \$1.60 |
| 1-yr., 3 1/2 -5 ft. tall | 1.75 | 1.65 | 1.45 | 1.25 |
| 1-yr., 3 -4 ft. tall | 1.50 | 1.35 | 1.25 | 1.00 |

Growers please write for special prices on quantity lots.
Dates after varieties indicate ripening season.

1. Good Stock
2. True-to-name
3. Guaranteed
4. Early to Bear
5. Disease Free
6. Best Varieties

CHERRIES -

CHERRY COLLECTION "D"

1 Black Tartarian 1 Windsor
2-Yr., 3-4 ft. Trees
2 for \$3.30, Postpaid
(\$4.00 Value)

SOUR CHERRIES

- 1201 **MONTMORENCY.** See illustration page 12.
- 1214 **ENGLISH MORELLO.** Small round-headed tree, large dark red fruit. Good quality. Excellent for pies. July.

PRICES OF SOUR CHERRY TREES

Your Choice of Varieties, Alike or Assorted

| | 1-6 | 7-12 | 13-25 | 26-50 |
|------------------------------------|--------|--------|--------|--------|
| | Each | Each | Each | Each |
| 2-yr., 4-6 ft. tall | \$2.50 | \$2.35 | \$2.20 | \$1.85 |
| 2-yr., 3-5 ft. tall | 2.10 | 1.90 | 1.70 | 1.40 |
| 2-yr., 2-3 ft. tall | 1.85 | 1.70 | 1.50 | 1.20 |
| 1-yr., 9/16 in., 3 ft. tall and up | 2.10 | 1.90 | 1.70 | 1.40 |
| 1-yr., 7/16 in., 2 1/2 -3 ft. tall | 1.85 | 1.70 | 1.50 | 1.20 |
| 1-yr., 5/16 in., 2-2 1/2 ft. tall | 1.55 | 1.40 | 1.20 | .90 |

Growers please write for special prices where quantity lots are desired. The dates after varieties indicate ripening season of the fruit. All 1-year trees are shipped separate from other stock.

SWEET CHERRIES

- 1206 **EMPEROR FRANCIS.** One of the newer Cheries of Napoleon type but better in quality. Early July.
- 1210 **SCHMIDT'S BIGARREAU.** The fruit is very large size, of deep mahogany color. One of the best for sauce. Mid-July.
- 1204 **NAPOLEON.** (Yellow Oxheart). Fruit is large, light amber over-toned with red; used for canning and maraschino purposes. Enormous crops. Early July.
- 1211 **SWEET SEPTEMBER.** The fruits are an attractive dark red, similar to the Windsor, deliciously sweet; excellent for eating fresh or canning. Ripens about September 1st. PRICE: 2-yr., 5-6 ft., \$3.00 each; 5 for \$14.25. 2-yr., 4-5 ft., \$2.50 each; 5 for \$11.75.
- 1202 **WINDSOR.** Fruit popular for its large size and dark color; almost black. Juicy. Late July.
- 1203 **BLACK TARTARIAN.** See illustration page 12.

PRICES OF SWEET CHERRY TREES

(Except as noted)

Your Choice of Varieties, Alike or Assorted

| | 1-6 | 7-12 | 13-25 | 26-50 |
|--------------------------|--------|--------|--------|--------|
| | Each | Each | Each | Each |
| 2-yr., 4 -6 ft. tall | \$2.75 | \$2.60 | \$2.50 | \$2.10 |
| 2-yr., 3 1/2 -5 ft. tall | 2.40 | 2.25 | 2.05 | 1.75 |
| 2-yr., 3 -4 ft. tall | 2.00 | 1.85 | 1.65 | 1.50 |
| 1-yr., 3 -5 ft. tall | 2.40 | 2.25 | 2.05 | 1.75 |

Growers please write for special prices where quantity lots are desired. The dates after varieties indicate ripening season of the fruit. All 1-year trees are shipped separate from other stock.

JAPANESE VARIETIES

- 1003 **ABUNDANCE.** One of the best Japanese Plums. Fruit medium size, amber with markings of red; juicy, sweet. August.
- 1004 **BURBANK.** Large, reddish purple skin. Early August.
- 1006 **FELLENBERG PRUNE.** (Italian). The most popular commercial Prune. Valuable for dessert, market, drying or preserving. Fruit large dark purple with blue bloom. Flesh is juicy, delicious separating freely from the stone. Late September.
- 1008 **LOMBARD.** Handsome reddish Plum, flesh yellow. An excellent variety and can be relied upon for a crop when other varieties fail. Late September.

PRICES OF STANDARD PLUM TREES

Your Choice of Varieties, Alike or Assorted

| | 1-6 | 7-12 | 13-25 | 26-50 |
|--------------------------|--------|--------|--------|--------|
| | Each | Each | Each | Each |
| 2-yr., 4 -6 ft. tall | \$2.50 | \$2.35 | \$2.20 | \$1.85 |
| 2-yr., 3 1/2 -5 ft. tall | 2.10 | 1.90 | 1.70 | 1.40 |
| 2-yr., 3 -4 ft. tall | 1.85 | 1.70 | 1.50 | 1.20 |

Growers please write for special low prices on quantity lots of 1-yr. and 2-yr. trees. The dates after varieties indicate the ripening season of the fruit.

America's Best Plums

EUROPEAN VARIETIES

- 1011 **STANLEY.** See illustration page 12.
- 1005 **BRADSHAW.** See illustration page 12.
- 1012 **YELLOW EGG.** Large, golden yellow. September.

INSPECTION NOTICE

All salable 2-year Apple, Cherry, Plum and Pear varieties propagated and now growing in the nurseries of Maloney Bros. Nursery Company, Inc., Dansville, New York, have been examined by the Massachusetts True-to-Name Inspection Service. To the best of our knowledge these trees are true-to-name as they now stand in the nursery row.

MASSACHUSETTS TRUENESS-TO-NAME INSPECTION SERVICE

PLUM COLLECTION "E"

1 Stanley 1 Bradshaw
2-Yr., 3-4 Ft. Trees
2 for \$3.00, Postpaid
(\$3.70 Value)

If they're Northern Grown, they're HARDY



Delicious, Juicy Tree Ripened PEARS Can Be YOURS!

PRICES OF STANDARD PEAR TREES

Your Choice of Varieties, Alike or Assorted (Except as noted)

| | 1-6 | 7-12 | 13-25 | 26-50 |
|----------------------|--------|--------|--------|--------|
| | Each | Each | Each | Each |
| 2-yr., 4 -6 ft. tall | \$2.50 | \$2.35 | \$2.20 | \$1.85 |
| 2-yr., 3½-5 ft. tall | 2.10 | 1.90 | 1.70 | 1.40 |
| 2-yr., 3 -4 ft. tall | 1.85 | 1.70 | 1.50 | 1.20 |

Growers please write for special low prices on quantity lots of 1-yr. and 2-yr. trees. The dates after varieties indicate the keeping season of the fruit.

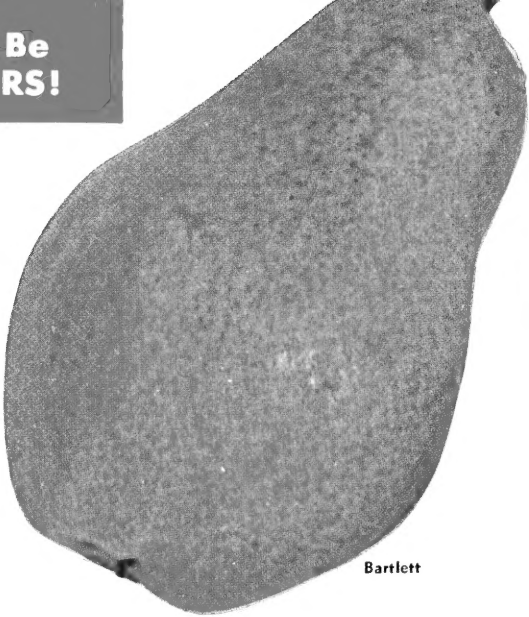
- 801 BEURRE BOSC.** Large, yellow; flesh white, rich and delicious. Very popular early winter Pear. October-January.
- 802 CLAPP'S FAVORITE.** A large, fine Pear; pale lemon-yellow with brown dots; of fine texture. Melting, buttery, juicy with delicate flavor. Tree hardy and productive. August and September.

- 804 SECKEL.** Small, yellow, red cheek; juicy, excellent for canning. Mid-September.
- 806 BARTLETT.** Large, yellow, waxy, rich and juicy; tree hardy. The best Pear for home and market. Early October.

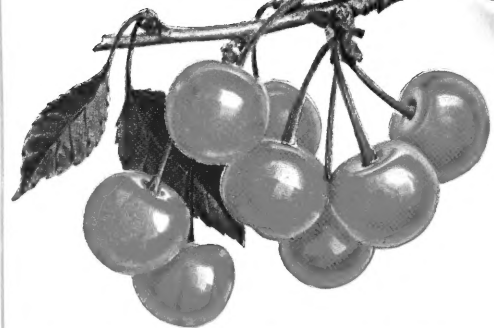
808 NEW SEEDLESS PEAR
No Seeds—No Core

A new fruit sensation. New discovery in a seedless and coreless Pear. Resembles Bartlett in many ways, including its color. Ripens 10 days after Bartlett. Keeps well in storage and ripens evenly. **PRICE:** 2-yr., 5-6 ft., \$2.50 each, not postpaid.

PEAR COLLECTION "H"
1 Bartlett 1 Beurre Bosc
2-Yr., 3-4 Ft. Trees
2 for \$3.00, Postpaid
(\$3.70 Value)



Bartlett

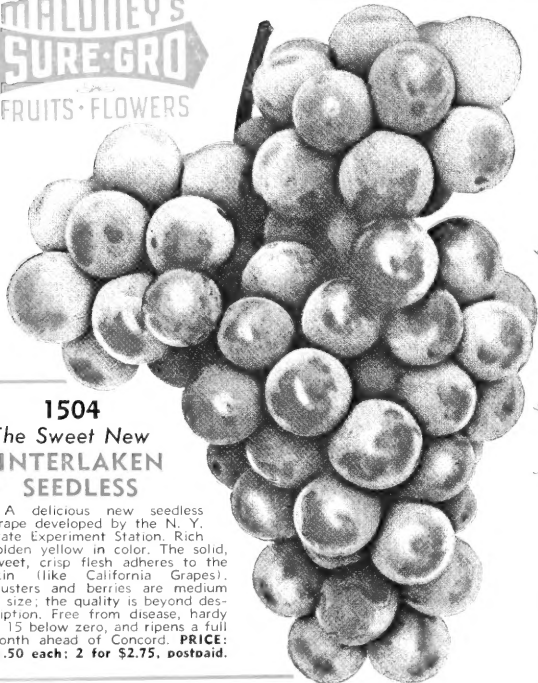


New! DWARF CHERRY TREE

Now, a Dwarf Cherry tree that is pretty and practical. Most decorative in the spring and later a crop of bright red, delicious Cherries. Makes delicious pies and often bears in two years.

1216 METEOR

A small sized Sour Cherry tree of the Montmorency type and an excellent Cherry. The fruit is large, the flavor pleasant and quality good. Ripens about mid-July. Self fruitful. **PRICE:** 2-3 ft., \$3.00 each; 2 for \$5.75.



1504
The Sweet New INTERLAKEN SEEDLESS

A delicious new seedless Grape developed by the N. Y. State Experiment Station. Rich golden yellow in color. The solid, sweet, crisp flesh adheres to the skin (like California Grapes). Clusters and berries are medium in size; the quality is beyond description. Free from disease, hardy to 15 below zero, and ripens a full month ahead of Concord. **PRICE:** \$1.50 each; 2 for \$2.75, postpaid.

GRAPE VINES

Maloney's Strong Rooted Specimens

PRICES (except as noted): 2-yr., No. 1, strong vines, postpaid, 75c each; 3 for \$1.95; 10 for \$5.50. Not postpaid, 25 for \$11.25; 50 for \$17.50.

- 1502 CONCORD.** Best commercial Grape. Bunch and berry large, juicy and sweet. Productive, excellent for Grape juice. Late September.
- 1503 CONCORD SEEDLESS.** Same color, flavor and season as Concord but HAS NO SEEDS. Wonderful for desserts and pies. Late September. **PRICE:** 2-yr., No. 1, strong vines, \$1.00 each; 3 for \$2.70, postpaid.
- 1508 FREDONIA.** New. The leading early black Grape. Plant is a strong, healthy grower; good clusters; berries large and juicy. Early September.
- 1505 CACO.** Red. Large berries of highest quality. Flavor is sweet and delightful. One of the best for home use. Mid-September.
- 1509 NIAGARA.** White. Occupies same position among white varieties as Concord among black; bunch and berries large, greenish white, changing to pale yellow when fully ripe. Late September.
- 1510 GOLDEN MUSCAT.** Possesses a rich golden color and the fine Muscat aroma of European Muscat. Vine is vigorous, productive. The clusters are very large. The berries are large, oval, juicy, tender, sweet. Early October. **PRICE:** \$1.00 each; 3 for \$2.70, postpaid.
- 1511 SENECA.** New. White. Outstanding. One of the best varieties for dessert. Berries large, flavor sweet and aromatic. Early September. **PRICE:** \$1.00 each; 3 for \$2.70, postpaid.
- 1512 BRONX SEEDLESS.** Red. The best new red seedless Grape available, with large, very long clusters. Berries are large, firm, crisp and entirely seedless, of excellent quality. Productive and vigorous, ripening the latter part of September. **PRICE:** \$1.25 each; 3 for \$3.25, postpaid.
- 1507 DELAWARE.** Red. Bunches small, compact, delicious. Extremely popular. Early Oct.

GRAPE COLLECTION "G"

- 1 Caco 1 Fredonia
- 1 Seneca 1 Concord
- 2-yr., No. 1 Vines
- 4 for \$1.60, postpaid**



1501 STEUBEN

A new creation of the New York State Experiment Station. Huge, perfectly formed, blue Grapes are produced on extremely hardy vines. The fruit is of outstanding quality, is tender and sweet and has a delicate perfume-like flavor. No spraying necessary, free from rot and mildew. **PRICE:** \$1.50 each; 2 for \$2.75, postpaid.

For Free Gifts See Page 15

Grow Mushrooms at Home!

2306 MALONEY'S MAGIC MUSHROOM TRAYS are pre-planted Mushroom beds set in portable wooden flats all ready to grow. In your basement or storage cellar, you can have Mushrooms in two to three weeks with a continuous yield for two to four months. Ready to pick when you want them.

They are safe. Compost is pasteurized. Will grow in any cool place. Ideal temperature is 52 to 65 degrees. Complete instructions with each order.

Magic Mushroom Trays are shipped upon order from October 15 to April 15.

PRICES: Shipped to you by express (not prepaid) from our grower in Ohio.

3 "Magic" Trays \$4.65

6 "Magic" Trays 7.80

Maloney "MAGIC" MUSHROOM TRAYS



PLANT This FALL!

- Leading horticulturists recommend it.
- Ideal planting time—a few reasons are:
- Stock will make root growth during the warm period in winter.
- All stock is freshly dug.
- Everything planted in fall becomes well established by spring and starts faster than spring planted stock.

INDEX

| | | | |
|-----------------------------|--------|-------------------------------|----------|
| Apple, 5-in-1 | 10, 16 | Maple Trees | 3, 6 |
| Apples, Std. | 12, 13 | Multiflora Rose | 11 |
| Apples, Dwarf | 16 | Mushroom | 15 |
| Apricot Trees | 11 | Peach Trees | 12, 13 |
| Ash, European | 6 | Pear Trees, Std. | 14 |
| Asparagus | 11 | Pear Trees, Dwarf | 16 |
| Barberry | 9 | Peonies | 9 |
| Bittersweet | 4 | Perennials | 9 |
| Blackberries | 11 | Pink Deutzia | 3 |
| Blueberries | 10 | Plums | 12, 13 |
| Cardinal Shrub | 3 | Poplar Trees | 6, 9 |
| Chestnuts | 16 | Privet | 3, 9 |
| Cherry Trees, Std. | 12, 13 | Prunus, Newport | 6 |
| Cherry Trees, Dwarf | 14 | Quince | 11 |
| Crocus | 2 | Ra-Pid-Gro | 11 |
| Daffodils | 2 | Raspberries | 10 |
| Elm, Chinese | 6 | Red Emperor Tulip | 16 |
| Evergreens | 7 | Red Leaf Peach Tree | 6 |
| Evergreen Bittersweet | 3 | Roses | 8, 11 |
| Free Gifts | 15 | Shrubs | 4, 5 |
| Grapes | 14 | Tulips | 1, 2, 16 |
| Hansen Bush Cherry | 11 | Vines | 7 |
| Hedges | 9 | Washington Cherry Trees | 6 |
| Hyacinths | 2 | Weeping Willows | 6 |
| Locust, Moraine | 3 | | |



BUY BY MAIL!

It's Easy to Order

Buying at Maloney's by mail is convenient and economical. Yes! You can do all your shopping for the city, farm or suburban home, leisurely from your easy chair in the comfort of the home.

Please fill in all the columns, using our convenient order sheet and envelope accompanying this catalog (no postage required).

We sell only selected stock grown by our experienced men. True-to-name, Maloney northern grown hardy nursery stock guarantees success.

HOW TO ORDER

TERMS: Cash with order is required or stock will be shipped C.O.D.

C.O.D. Send 25% of total price with C.O.D. orders. Pay balance on arrival to your express agent or (if freight) to your freight agent.

HOW TO REMIT: By personal check, express money order, post office money order, bank draft, or cash in a registered letter. Please do not send stamps.

SHIPPING SEASON: We ship at the time best suited to your locality, usually October 15th to November 30th. Perennials and evergreens are shipped starting October 1st.

This catalog cancels any prices prior to now.

WARRANTY: No caution is more exacting than ours. We will with proper proof, replace free all trees, etc., that may prove untrue to label or refund the price paid. We give no further warranty.

MALONEY'S

FREE GIFTS

For Ordering Early!

THESE VALUABLE GIFTS ARE FREE! You can have them, at no cost to you, if you will send your nursery order to us by October 22. You see, when orders are sent to us early, it is easier for us to give better selections and plan for shipment at just the right time for planting. This is all you have to do:

- On nursery orders of \$5.00 to \$10.00, select one of the 6 free gifts.
- On orders of \$10.00 to \$20.00, select two gifts, alike or different.
- On orders of \$20.00 to \$30.00, select three gifts, alike or different.
- On orders of \$30.00 or more, select four gifts, alike or different.

YOU MAY SELECT GIFTS AS FOLLOWS:

- | | |
|---|---|
| A. 15 Assorted Holland Tulips, our regular mixture of top size bulbs. | D. 1 Blueberry plant 12-18 in., your choice of variety, worth \$1.40. |
| B. 25 Crocus bulbs, our regular mixture, including all colors. | E. 1 Everblooming Rose (non-patented variety) worth \$1.35. |
| C. 1 Beautiful, 2-yr., No. 1 shrub, your choice of Golden Privet, Red Leaved Barberry, Tamarix africana or Snowberry, worth \$1.25. | F. 2 Grape Vines, No. 1 standard varieties, worth \$1.50. |

Gifts must be taken as nursery stock and NOT as a cash deduction. Your selection of gifts MUST BE WRITTEN ON YOUR ORDER or the gifts will not be sent, even if you notify us later. We reserve the privilege of substituting different gifts of equal or greater value should we run short of some items. Free Gift Expires October 22.

Maloney's GUARANTEE

WE GUARANTEE to deliver stock in good condition, up to grade and specifications. If your order arrives in damaged condition, report immediately to carrier and to us. We will correct errors promptly or refund your money. WE REPLACE FREE OF CHARGE ANY PLANT THAT FAILS TO GROW, PROVIDED YOU CAREFULLY FOLLOW OUR PLANTING INSTRUCTIONS, and provided no unusual weather conditions prevail such as drought, hail, etc., and that you report on its condition before June 1st on shipments made the previous fall. Please return your original order sheet when writing.

OUR REFERENCES: Security Trust Co., Danville Branch; Dun & Bradstreet Commercial Agency, New York City.

SIZE OF ORDERS: We cannot accept orders for less than \$2.00 under prevailing conditions.

WE PAY POSTAGE: Many items in this catalog are delivered to your door postpaid. Items that are too large to go by parcel post are sent to you by express, and you pay the express charges. Where there is a mixed order of postpaid and express items, we ship the whole order express, prepaying in advance our portion of the charges. NOT POSTPAID INTO CANADA.

We are members of the American Association of Nurserymen, New York State Nurserymen's Association and the National Mail Order Nurserymen's Association.

MALONEY BROS. NURSERY CO., Inc. Danville, New York

Established 1884

Now Every Garden Large or Small Can Grow These "Dwarfs"

DWARF APPLE

These trees are not new with us. Several years ago we started growing them from Mallings stock secured from N. Y. State Experiment Station. We offered them for sale, the first of their kind sold in the United States. They are without question the "perfect" trees for the lawn or garden.

Maloney's dwarf fruit trees are dwarf in tree size only. The trees bear full size standard fruit. Of bushy habit, they can be planted 15 ft. apart and kept to a height of 10 to 12 ft.

We can furnish the following varieties:

| | |
|-----------------------|-----------------------|
| 8004 ROGERS McINTOSH | 8003 RED NORTHERN SPY |
| 8006 YELLOW DELICIOUS | 8010 EARLY McINTOSH |
| 8000 CORTLAND | |

(For description see standard varieties, page 13).

PRICES OF ALL DWARF FRUITS:

| |
|--|
| 2 1/2-3 ft. . . \$2.75 each; 3 for \$7.50; 6 for \$13.50 |
| 3 -4 ft. . . \$3.25 each; 3 for \$9.00; 6 for \$16.50 |

DWARF PEAR

Dwarf Pear trees are also a very valuable addition to any lawn or garden. Like the Apple, it is a low growing tree. Fruit is easily accessible from the ground and the fruit is large standard size. Approximately 15 ft. at maturity. Plant 12 feet apart.

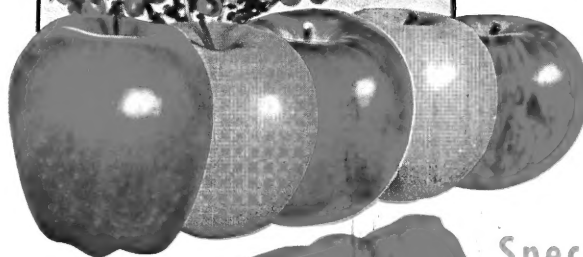
We can furnish the following varieties:

| | |
|---------------|-----------------------|
| 8076 BARTLETT | 8077 CLAPP'S FAVORITE |
|---------------|-----------------------|

(For description see standard varieties, page 14).



Rogers McIntosh



MALONEY'S Dwarf 5-in-1 Apple

8008—Now because of special grafting you can have five different kinds of Apples all growing on one tree which will never grow higher than you can reach! Imagine the thrill of picking five different Apples from the one tree! Great big, regular size fruit from a one-tree orchard. Ideal where space is limited for you get five-on-one. Fruit all the time and no more ladders, long pruning poles or high pressure sprayers. Bears fruit in two to four years.

VARIETIES: Double Red Delicious, Cortland, Early McIntosh, Yellow Transparent, Yellow Delicious. PRICE: 3-yr., large, 3-4 ft., \$4.75 each.

BEAR FULL SIZED FRUITS

Spectacular GIANT!

A MASTER TULIP OF GREAT SIZE AND COLOR

PLANT RED EMPEROR

5124

Red Emperor

King of the Tulips

Enjoy the world's earliest, largest, most vivid red Tulip with blooms measuring 9 in. across on sturdy, 15-inch stems. Certainly a royal member of the Tulip kingdom both in size and beauty. Now at Maloney's new low price you can afford to plant liberally for a more delightful garden next spring. PRICE: 10 for \$1.25; 25 for \$2.75; 50 for \$5.25; 100 for \$9.25, postpaid.

LUSCIOUS FULL SIZE FRUIT

Quicker Bearing - Easier To Care For and Saves Ground Space

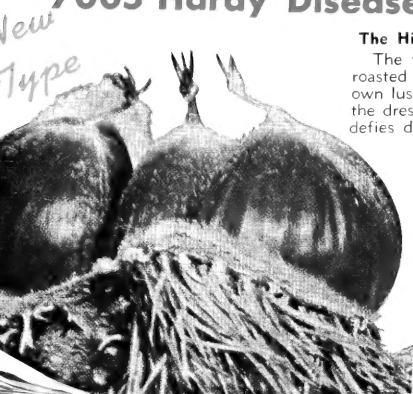
7005 Hardy Disease Resistant Chestnuts

The Highly Prized Sweet Chestnuts Gathered Each Fall

The famous tradition and taste treat of your own fresh roasted Chestnuts. Imagine the pleasure of gathering your own luscious Chestnuts to roast over an open fire or use in the dressing served with the family turkey. The taste thrill defies description.

By selecting special Chinese stock, our trees are all guaranteed trouble-free and will bear bumper crops of ready to roast golden brown Chestnuts. These specially selected trees will soon grow to heights of 30 to 40 feet, casting restful shade to improve your property throughout the years. Maloney's trees will thrive in any good garden soil but prefer a sunny location. Plant two or more trees to insure pollination.

PRICE: 18-24 in., \$2.25 each; 2-3 ft., \$2.60 each; 3-4 ft., \$3.25 each.



New Type